

# ST. JOHN'S

*St. John's exists as a new family to embody God's reality & hope in our world.*

## SUNDAY WORSHIP

10<sup>am</sup> January 31, 2010

*Welcome - you're invited to experience God's presence as you choose.*

### CELEBRATION

OPEN	The Church's One Foundation, arranged by Jones	Cyril Deaconoff
	Rejoice, the Lord is King	Karen Irwin & Choir
WELCOME & CALM		John Anderson
SING*	(*please stand as able) Sing a New Song vv. all	red book 6
PRAY	one: Living God, we praise you for filling us with the knowledge that in you we find safety and security. In Jesus, you give us certainty to believe that when the worst happens, your care for us remains strong and constant for ever. <b>all: <i>Jesus showed that rejection, ridicule and risk, did not stop him from proclaiming your love, mercy and power. We draw near, confident in your love and protection. We praise you, trust you, adore you.</i></b> (silent offering of gratitude)	
	one: Lord, you command us to love one another. Forgive us when we replace ideas about love for its action. You show us real love is kind and patient; not envious, boastful, arrogant or rude, but bears, hopes and endures. <b>all: <i>Forgive us for being influenced by the 'resounding gongs' or 'clanging cymbals' of our age and fail to discern your call to love others. Realign our lives and hearts so that faith, hope and love dwell within us, and our lives testify to your greatest gift.</i></b> (silent accepting of God's grace)	
	one: Amen. God did not send Jesus into the world to condemn the world but so the world might be saved through him. (John 3.17), therefore we declare: in Jesus Christ we are forgiven. <b>all: <i>In Christ, we are reconciled and empowered to begin anew!</i></b>	
AFFIRM*	<b><i>Jesus, your light is shining within us. Let not my doubts &amp; my darkness speak to me. Jesus, your light is shining within us. Let my heart always welcome your love.</i></b>	

GREET\*

*(Share a greeting of peace, comfortable for you.)*

CHOIR

How Will They Know by Mark Patterson

**COMMUNITY**

LISTEN

*(The Lord of the language is also the Lord of our listening.)*  
 Jeremiah 1.4-10 (p.1169) Psalm 71.1-6 (p.907)  
 1 Corinthians 13.1-13 (p.1786) Luke 4.21-30 (p.1596)

ENGAGE

Show or Go

*"If I've a faith that moves mountains, but haven't love, I'm nothing." 1 Corinthians 13.2*

over anticipating  
 self gratifying  
 ever excelling  
 still persevering

SING\*

As Deer Long vv. all

blue book 189

**COMMITMENT**

PRAY

*ecumenical version - or use a version or language you prefer)*

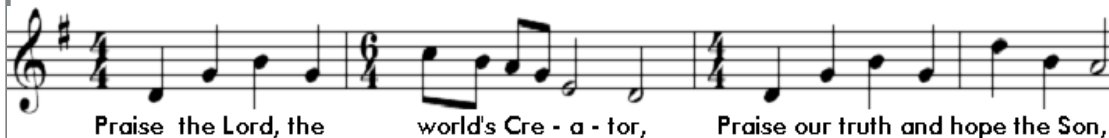
***Our Father in heaven, holy is your name. Your kingdom come, your will be done, on earth as in heaven. Give us today our daily bread; forgive us our sins, as we forgive those who sin against us. Save us from the time of trial and deliver us from evil. For the kingdom, the power and the glory are yours, now and forever. Amen***

SHARE LIVES  
& GIFTS

*(Please sign, pass clipboard & place page in the basket. All may share.)*  
 O Lord, Our Refuge arranged by Smith

Theresa Cho

AFFIRM\*



DEDICATE\*

one: Why do we come?

***all: We come to respond to God's invitation to us through the gift of Jesus Christ. We come remembering that gift, to participate in Jesus' living presence among us, to continue the work of reconciliation, renewal, compassion and justice which God has given us to do as his Body.***

one: What do we bring?

*all: We bring our offerings and commitments - signs of our whole selves.*

one: What is our history?

*all: Before God took compassion on us, before Jesus proclaimed us to be part of the Realm of God's love and justice, we were a drifting people, sometimes confused, seeking, without faith, hurting ourselves and others, but still we wanted to know God.*

one: What do we proclaim?

*all: We believe God's love guides even our drifting; Christ's presence that brings us clarity; the Holy Spirit's movement that makes our faith vibrant and God's justice, concrete. We believe it is our prayer, action, community and presence to one another that solidifies our identity as Christ's Body. We come with joy and expectation.*

one: What is our commitment to God and one another?

*all: We come as a grateful people, thankful for our blessings and this community. We promise to God and to one another, to respect God's presence in this world. We will pray for guidance, we will stand with one another when suffering, confusion and challenge; we will share our witness and listen. We will follow Jesus and proclaim the gospel through word and deed, with our gifts and service of our lives as tangible signs of our commitment.*

KIDS

## COMPASSION

SING\*

Bring Forth the Kingdom vv. all

red book 44

SEND & BLESS\*

(You're invited for conversation & caffeine in back.)

CLOSE

Rejoicing by Handel

## TODAY

**COFFEE/TEA** - You're welcome to have it before, during & after worship. Feel free to bring & share snacks.

**GUESTS** - We welcome you to this family of faith. As your hosts we love your questions & comments.

**WE LOVE KIDS** - They can wander or color at front table at left. Animals & books in back for restless parents.

**LIGHTHOUSE** - our nursery for kids 0-4 located in the chapel on left, front.

**LITTLE MARINERS** - Preschool, offered every Sunday in back of sanctuary. Help yourself to materials.

**A.R.K.** (All Remarkable Kids) - kids K - 5<sup>th</sup> grade, downstairs in Fellowship Hall.

**FAITH NAVIGATORS** - grades 6-8 in the Fireside Room.

**LISTENING DEVICES** - Available for hearing impaired, or parents with kids in The Lighthouse - to hear worship.

**NAME TAGS** - Help others remember your name. Indicate on the clipboard if you wish one made for you.

**PARKING** - Guests: double-park on Lake St. (DPT ticket when cars blocked). Free @ St Anne's, 3<sup>rd</sup>/4<sup>th</sup> @ Lake.

**RESTROOMS** - On both levels (upper level is fully accessible with changing table).

**THE EAGLE** - Receive our Eagle (newsletter). Find it in back, on website or request it on clipboard.

**WELCOME** - Please indicate your wishes on clipboard as it's passed & please place page in the offering basket.

## LIVING OUR VISION

**OUR COMMITMENT is to passionately follow Jesus.**

**COMMITMENT CLASS** - Explore the meaning of a journey following Christ & being part of St. John's as your spiritual home. Indicate interest on the clipboard or call/email a pastor & we'll let you know of the next class.

**FAITH on TAP** - at the Bitter End Pub (441 Clement, @ 5<sup>th</sup> & 6<sup>th</sup>) Feb. 17 (3<sup>rd</sup> Wednesdays), 6<sup>30</sup>-7<sup>30</sup>pm. A safe place to talk faith, ask questions & maintain your integrity - no faith required. See pastor John or just show up.

**GIVING** - envelope boxes for all in back of sanctuary, or use secure eGive @ our home page, stjohnessf.org

**OUR COMMUNITY is empowered by the Holy Spirit.**

**COMMUNITY CLASS** - Explore growth in study, prayer, giving & fellowship. Monday, Feb. 1, 6<sup>30</sup>-7<sup>30</sup>pm, in Library. Please confirm with pastor John by 10<sup>am</sup> of class day. Child care available by request.

**MEN'S BREAKFAST** - Each 1<sup>st</sup> Saturday, 8-9<sup>am</sup>, @ Lucky Penny, Geary/Masonic, John Lenox 7521365.

**ALPHABET DINERS CLUB** - Eating our way thru the alphabet. Feb. 25 - Las Ramblas (Spanish) - good food & conversation. Contact pastor Theresa to RSVP. More - stjohnessf.org

**GOSPEL BITES** - at the Bitter End Pub (441 Clement, @ 5<sup>th</sup>/6<sup>th</sup>) Feb. 3 (1<sup>st</sup> Wednesdays), 6<sup>30</sup>-7<sup>30</sup>pm. See pastor John or just show up. We look at the gospel of John - images and imagination for our lives.

**CHOIR** - Join choir on Open Anthem Sunday, Feb. 7. See Karen; on-line tutorial at karenirwin.posterous.com

**STUDY & KNIT** - Tuesdays, 7-8<sup>30</sup>pm, starting Feb. 2, novices welcome, see Deb M<sup>c</sup>Guire.

**FACEBOOK** - Check the St. John's community thru our website homepage, link up & be part of it.

**OUR COMPASSION embodies the peace & justice of God.**

**COMPASSION CLASS** - Discover gifts, talents & passions - your compassion. Monday, Mar. 1, 6<sup>30</sup>-7<sup>30</sup>pm, Library. Please confirm with pastor John by 10<sup>am</sup> of class day. Child care upon request.

**HARVEST** - Saturdays, 7<sup>30</sup>-9<sup>30</sup>am share food with our hungry neighbors. Info: johnwtempleton@yahoo.com

**ST. JOHN'S CINEMA** - Thurs., Feb. 4, 7-8<sup>30</sup>pm, King Corn Farmers learn how our most- subsidized grain is genetically modified & influences our lifestyle & diet. Free. (views not necessarily of St. John's or members.)

**OUR GIVING** - We strive to give away 10+% of our income. Some recipients shown on back bulletin board.

**What's New!**

**HAITI RELIEF** - Presbyterian Disaster Relief responds, you can too, note it on your check or go to [www.pcusa.org/pda/](http://www.pcusa.org/pda/) PDA is accepting donations online & by phone at (800) 872-3283

**COMMITMENT SUNDAY** - today, See how our lives & others are touched. Displays show how our gifts (time & money) support our Commitment, Community, Compassion & Celebration.

**SNO TRIP** - Feb 5-7 at Zephyr Point Center in Lake Tahoe. Great sno fun - all ages are welcome! Spots go fast. more info: Leslie Bacho, [lbacho@sffb.org](mailto:lbacho@sffb.org) or go to [www.zephyrpoint.org](http://www.zephyrpoint.org)

**ASH WEDNESDAY** - Begin a new faith journey in Lent with worship, Wednesday, February 17, 6<sup>30</sup>-7<sup>15</sup>pm.

**BAKE SALE** - A.R.K. kids are selling baked goods, Feb 21 & 28 to support Harvest. To donate baked goods, contact pastor Theresa.

**PALESTINE** - Donate olive trees (\$20), buy Palestinian olive oil & find info on Mideast conflict at display in back.

**LAY CARE MINISTRY** - Trained caregivers provide Christian care, encouragement & listening in a confidential relationship. Contact pastor John if you know of someone who may benefit.

see in back @ [stjohnessf.org](http://stjohnessf.org)

**ST. JOHN'S PRESBYTERIAN CHURCH,  
PC (U.S.A.)**

*Ministers* all members

*Choral Director* Karen Irwin  
[kcirwin@stjohnessf.org](mailto:kcirwin@stjohnessf.org)

*Organist* Cyril Deaconoff  
[cdeaconoff@stjohnessf.org](mailto:cdeaconoff@stjohnessf.org)

*Coordinator of Ministries*

Susie Moore [smoore@stjohnessf.org](mailto:smoore@stjohnessf.org)

*Parish Associate*

Deb M<sup>c</sup>Guire [dmcguire@stjohnessf.org](mailto:dmcguire@stjohnessf.org)

*Pastors*

John Anderson [janderson@stjohnessf.org](mailto:janderson@stjohnessf.org)

Theresa Cho [tcho@stjohnessf.org](mailto:tcho@stjohnessf.org)

**25 Lake St SF, CA 94118 415.751.1626**